

SOLENOCENTRUM

Solenocentrum maasii Dressler, *sp. nov.*

Holotype: Costa Rica: prov. Puntarenas, Las Alturas and vicinity, forest, 1 800 m; 26-VIII-1974; P.J.M. Maas and B. McAlpin 1479 (MO). Figure 7.

Herbae terrestres erectae circa 30 cm altae validae, foliis bassilaribus rosulatis basin versus asymmetrice et late cuneatis ellipticis acuminatis, spica circa 18 cm longa, bracteis glabris, sepalo postico lanceolato, sepalis lateralibus ovatis, basi margine anteriore in lobo falcato-oblongo producta, petalis unguiculatis asymmetrice anguste triangularis, labello concavo late ovato, calcare cylindrico apicem versus leviter ampliato, glabro.

Terrestrial herbs, *ca.* 30 cm tall; roots fleshy, pilose, 1.5-2 mm in diameter; leaves several, basal, petioles basally sheathing, 10-12 cm long, blades elliptic, 9-11 x 4-4.2 cm, basally asymmetrically and broadly cuneate, acuminate; inflorescence terminal, scape *ca.* 21 cm, lowest bract foliar with distinct petiole, *ca.* 6.3 x 2.6 cm, remaining bracts 15-22 x 3-7 mm, subfoliar distally; raceme 6-7 cm, floral bracts lanceolate, *ca.* 10 x 3 mm; ovary and pedicel glabrous, *ca.* 12 mm; flowers greenish, nonresupinate; dorsal sepal lanceolate, acute to acuminate, 5 x 1.2-1.5 mm, lateral sepals ovate, glabrous, 5-6 x 2.7-3.2 mm, with prominent, falcate-oblong, obtuse basal lobe 5 x 1.5-1.8 mm; petals unguiculate, basally adnate to column for *ca.* 1 mm, free portion narrowly triangular, basally asymmetrical, 4-4.5 x 1.7-2 mm, lip broadly ovate, concave, 4-4.5 x 3-4 mm, with prominent spur *ca.* 9 mm, inflated apically; column 3 mm.

This is distinctly more slender than the type species, *S. costaricense*, the flowers are quite glabrous, the apex of the spur is inflated, and the petals are narrower, with less prominent lateral lobes. *Solenocentrum* is a small genus. Garay has transferred *Cranichis asplundii* to *Solenocentrum*, though the illustration suggests an aberrant *Cranichis*, rather than *Solenocentrum*. *Solenocentrum lueri* Dodson & Vásquez, of Bolivia, is undoubtedly a true *Solenocentrum* and a bit more extreme in its features than the species of Costa Rica.

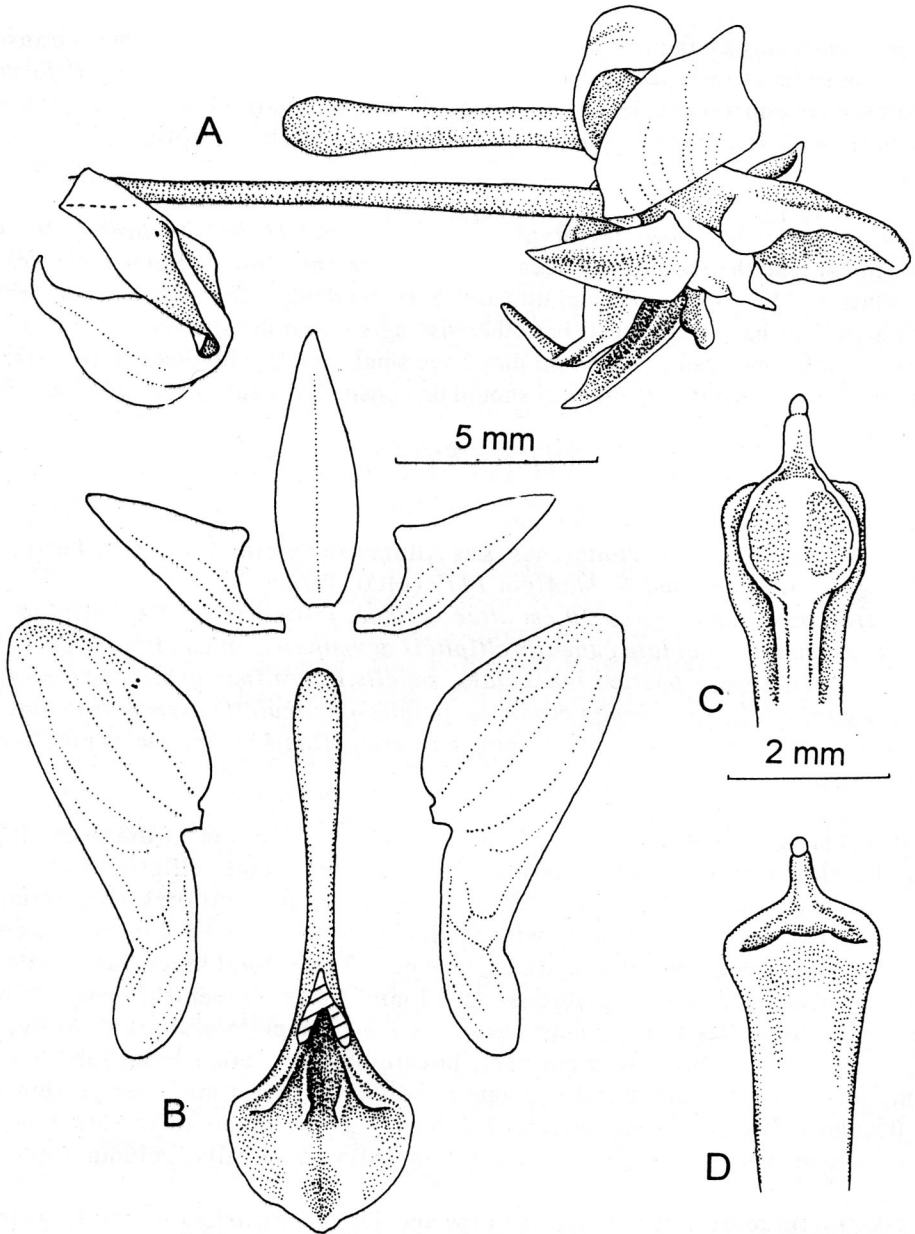


Figure 7. *Solenocentrum maasii*; A, Flower with bract, lateral view. B, Perianth parts, flattened (exc. lip). C, Column, dorsal view. D, Column, ventral view. Based on type specimen.